

Testing Can Uncover Hidden Health Problems In Your Pet

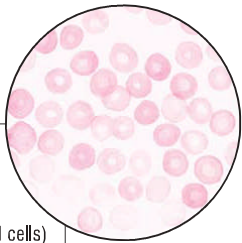
Early detection. Reduced risk. Peace of mind.

We may screen for some of the following conditions in determining your pet's health status.

BLOOD

CBC/Hematocrit are used to screen for:

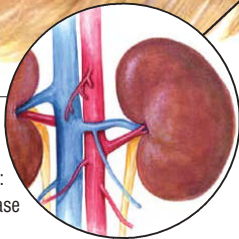
- Anemia (low red blood cells)
- Inflammation
- Infection
- Stress
- Leukemia
- Bleeding problem
- Inability to fight infection
- Hydration status



KIDNEY

Blood and urine tests can indicate:

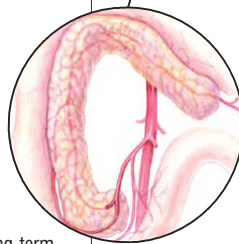
- Early renal disease
- Renal failure
- Infection
- Stones
- Cancer
- Abnormalities resulting from long-term medications



PANCREAS

Biochemistry tests can indicate:

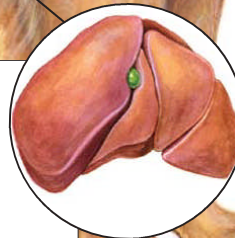
- Pancreatitis (inflammation of the pancreas)
- Diabetes mellitus
- Abnormalities resulting from long-term medications
- Cancer



LIVER

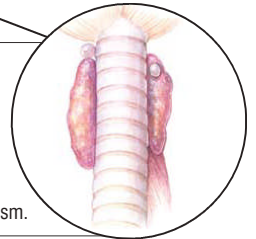
Biochemistry tests can indicate:

- Liver disease
- Cushing's syndrome
- Certain cancers
- Dehydration
- Obstruction of the bile ducts
- Abnormalities resulting from long-term medications



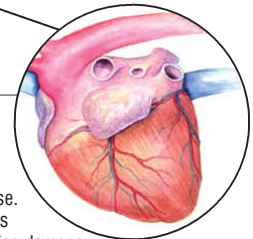
TEETH

Dental exams uncover mouth infections, which may cause secondary problems with vital organs.



THYROID

Biochemistry and serum T₄ tests can indicate hypothyroidism or hyperthyroidism.



HEART

Immunoassay tests can indicate heartworm disease. Biochemistry tests can indicate cardiac damage.

Diseases and conditions listed above represent some of the most common health issues afflicting small animals.